



October 1996

EMBARGOED UNTIL 11:30 AM THU 12 DECEMBER 1996

Commercial Finance

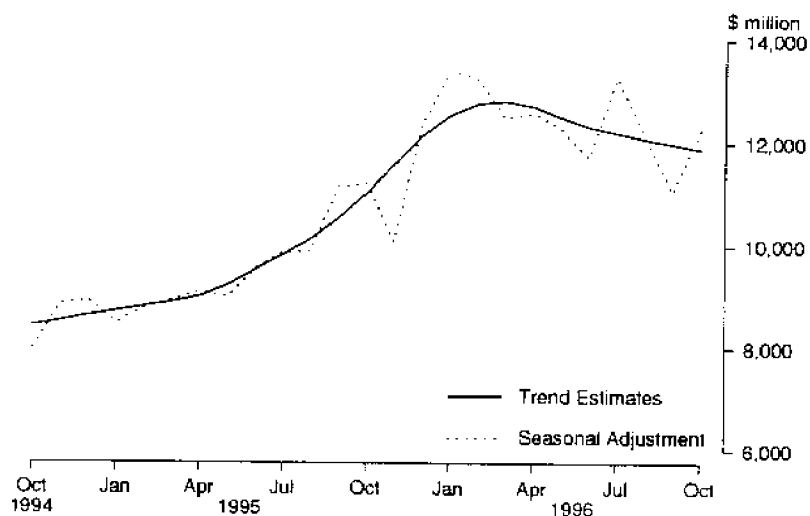
Australia

Data Report

© Commonwealth of Australia 1996

MAIN FEATURES

COMMERCIAL FINANCE, AUSTRALIA, OCTOBER 1994 - OCTOBER 1996



- 1** The provisional trend estimate for commercial finance commitments made by significant lenders in October 1996 totalled \$11 882.0 million, a decrease of \$101.5 million (0.8%) on September 1996 but an increase of \$872.8 million (7.9%) on October 1995.
- 2** Seasonally adjusted commercial finance commitments totalled \$12 257.1 million in October 1996, an increase of \$1 215.4 million (11.0%) on September 1996 and an increase of \$1 065.2 million (9.5%) on October 1995.
- 3** In original terms commercial finance commitments in October 1996 totalled \$11 552.9 million, an increase of \$528.6 million (4.8%) on September 1996 and an increase of \$1 989.5 million (20.8%) on October 1995.

INQUIRIES

- *for further information about these and related statistics*, contact Greg Smith on (02) 9268 4263.
- *for information about other ABS statistics and services* please refer to the back cover.

COMMERCIAL FINANCE COMMITMENTS: SUMMARY OF MOVEMENTS IN MAJOR AGGREGATES: Original, seasonally adjusted and trend estimates, OCTOBER 1996

Type of facility	Percentage change from previous month			Percentage change from corresponding month of previous year		
	Original	Seasonally adjusted	Trend	Original	Seasonally adjusted	Trend
	%	%	%	%	%	%
Fixed Loans	-1.8	-8.3	-1.0	18.6	7.2	8.6
Revolving Credit	11.4	32.6	-0.7	22.8	11.4	7.3
Total	4.8	11.0	-0.8	20.8	9.5	7.9

COMMERCIAL FINANCE COMMITMENTS: MAJOR AGGREGATES: Original, seasonally adjusted and trend estimates

Month	Commitments under fixed loan facilities			Commitments under revolving credit facilities			Total commitments		
	Original	Seasonally adjusted	Trend	Original	Seasonally adjusted	Trend	Original	Seasonally adjusted	Trend
	\$ million	\$ million	\$ million	\$ million	\$ million	\$ million	\$ million	\$ million	\$ million
1995 —									
August	5 556.2	4 874.2	4 832.8	5 142.2	5 008.8	5 291.2	10 698.4	9 882.9	10 124.1
September	5 107.1	5 636.8	5 018.9	5 671.1	5 495.1	5 502.1	10 778.2	11 131.9	10 521.1
October	4 597.4	4 988.1	5 174.4	4 966.0	6 203.8	5 834.8	9 563.4	11 191.9	11 009.2
November	5 190.2	5 084.2	5 309.0	5 219.4	4 983.6	6 249.5	10 409.6	10 067.8	11 558.6
December	5 297.1	5 206.6	5 411.2	8 673.2	7 118.7	6 694.6	13 970.3	12 325.3	12 105.9
1996 —									
January	4 471.2	5 776.3	5 486.6	7 611.2	7 621.0	7 037.6	12 082.4	13 397.3	12 524.1
February	4 964.1	5 557.0	5 577.2	5 735.3	7 676.7	7 173.4	10 699.4	13 233.7	12 750.6
March	5 992.6	5 903.6	5 674.0	6 124.6	6 575.5	7 134.3	12 117.3	12 479.1	12 808.3
April	4 613.1	5 413.6	5 756.8	7 127.3	7 170.4	6 952.6	11 740.4	12 584.0	12 709.4
May	6 210.9	5 665.0	5 795.6	5 674.9	6 608.5	6 701.2	12 885.8	12 273.4	12 496.8
June	7 700.1	5 958.2	5 806.0	6 905.2	5 766.1	6 500.8	14 605.3	11 724.3	12 306.8
July	6 961.2	6 208.6	5 793.3	7 545.6	7 075.2	6 400.9	14 506.8	13 283.8	12 194.2
August	5 580.9	5 414.2	5 748.8	5 865.1	6 713.8	6 338.3	11 446.0	12 128.1	12 087.2
September	5 552.5	5 828.3	5 677.9	5 471.8	5 213.4	6 305.6	11 024.3	11 041.7	11 983.5
October	5 454.7	5 346.7	5 619.2	6 098.2	6 910.5	6 262.9	11 552.9	12 257.1	11 882.0

TABLE 1 — COMMERCIAL FINANCE COMMITMENTS — OCTOBER 1996
(*\$ million*)

Purpose of commitment by type of facility	Type of lender				Total
	All banks	Finance companies	Money market corporations	Other lenders	
AUSTRALIA					
Commitments under fixed loan facilities —					
Construction finance for —					
Erection of —					
Dwellings for rental/resale	174.7	48.4	—	14.5	237.6
Non-residential buildings					
Shops	25.3	0.3	—	—	25.5
Offices	16.4	2.5	—	13.6	32.4
Industrial	33.8	1.4	—	10.0	45.2
Other	44.4	0.3	—	0.1	44.8
Total	119.9	4.4	—	23.6	148.0
Non-building structures	37.1	—	91.8	—	128.8
Alterations and/or additions	71.2	0.2	—	—	71.4
Purchase of real property —					
Dwellings for rental/resale by —					
Individuals	808.6	—	—	160.4	969.1
Other	235.9	2.9	—	29.3	268.0
Non-residential buildings					
Shops	82.2	0.1	—	—	82.2
Offices	116.5	—	—	1.5	118.0
Industrial	65.5	6.8	—	0.7	72.9
Other	66.6	1.6	5.0	0.3	73.5
Total	330.7	8.4	5.0	2.5	346.6
Rural property	75.4	—	—	—	75.4
Other land —					
For residential block development	39.4	18.7	—	—	58.1
Other	58.6	4.1	—	—	62.7
Wholesale finance	36.5	4.0	29.6	284.1	354.2
Purchase of plant and equipment —					
Motor vehicles	66.3	222.9	2.7	59.4	351.4
Other transport equipment	17.6	30.6	57.8	0.3	106.2
Other	104.2	116.0	13.1	—	233.3
Factoring	8.3	102.6	—	—	110.9
Refinancing	801.6	3.6	300.6	25.9	1,131.7
Other	692.3	23.0	48.5	37.4	801.2
Total fixed loan facilities	3,678.2	589.9	549.0	637.5	5,454.7
Commitments under revolving credit facilities —					
New and increased credit limits	4,115.2	75.5	1,856.7	50.9	6,098.2
Total commercial finance commitments	7,793.4	665.3	2,405.7	688.4	11,552.9
STATES(a)					
New South Wales	3,493.9	171.8	2,076.0	222.2	5,963.9
Victoria	2,046.4	147.1	329.7	144.4	2,667.6
Queensland	1,018.8	178.0	—	233.7	1,430.6
South Australia	367.6	53.5	—	24.8	445.9
Western Australia	665.3	92.8	—	53.0	811.1
Tasmania	54.8	n.p.	—	n.p.	65.2
Northern Territory	56.8	9.7	—	1.6	68.1
Australian Capital Territory	89.8	n.p.	—	n.p.	100.5

(a) From July 1996 Finance Companies and Other Lenders data is not available for publication for Tasmania and the ACT, but is included in totals where applicable.

TABLE 2 — COMMERCIAL FINANCE COMMITMENTS — ALL LENDERS
(\$ million)

YEARS	Commitments under fixed loan facilities for -											
	Construction finance for -				Purchase of real property							
	Erection of -		Alterations and/or additions		Dwellings for rental/resale		Non-residential buildings		Rural property		Other land	
Dwellings for rental/resale	Non-residential buildings	Non-building structures	Non-residential buildings	Alterations and/or additions	Dwellings for rental/resale	Non-residential buildings	Rural property	Residential block development	Other	Motor vehicles	Other transport equipment	Other
AUSTRALIA												
1993 1994	2,176.5	1,299.8	469.5	373.1	10,656.5	3,430.3	901.6	871.6	572.1	3,168.0	391.8	2,425.4
1994-1995	2,755.8	1,388.2	621.2	488.7	11,412.8	3,551.3	916.7	1,156.7	693.6	3,883.4	539.5	2,665.1
1995 1996	2,775.3	1,906.8	1,115.5	818.0	11,884.8	4,555.7	1,259.1	983.7	932.7	4,096.4	880.3	2,530.0
1995												
August	318.8	120.2	39.3	34.0	1,086.8	371.8	92.6	95.0	69.0	347.7	269.4	197.8
September	189.1	124.8	153.7	75.6	926.3	365.0	97.5	103.1	47.4	328.6	37.7	168.0
October	178.4	186.3	104.1	31.3	965.0	325.8	109.3	113.0	48.4	321.6	49.8	199.1
November	196.7	163.0	53.7	51.9	1,088.7	384.1	122.4	127.0	66.4	359.9	103.6	232.0
December	240.7	112.5	48.3	70.4	958.0	413.9	76.2	82.7	64.3	342.9	36.1	202.5
1996												
January	171.7	174.9	18.7	43.6	868.2	326.1	92.5	62.5	60.3	306.5	35.0	171.9
February	204.2	130.8	43.4	74.4	981.4	395.0	115.4	46.5	137.1	324.6	39.0	200.9
March	237.7	277.7	210.1	149.8	1,042.4	436.3	115.0	78.7	59.1	384.7	91.1	214.5
April	220.5	183.5	46.7	130.3	936.8	360.6	113.6	55.4	104.6	317.9	34.9	217.7
May	407.4	133.0	296.9	64.8	1,006.7	427.9	116.7	49.6	112.4	371.1	41.3	227.4
June	193.8	148.3	50.8	58.5	1,027.0	388.7	114.4	103.2	99.7	357.4	103.4	295.8
July	254.0	169.3	71.3	59.2	1,037.4	347.3	116.2	109.8	119.0	339.0	43.5	360.8
August	481.8	174.8	85.9	65.7	999.7	446.7	95.1	45.1	82.6	321.2	38.9	305.0
September	258.6	150.7	155.9	61.0	1,125.9	325.1	95.4	58.6	70.8	342.4	124.9	260.2
October	237.6	148.0	128.8	71.4	1,237.1	346.6	75.4	58.1	62.7	351.4	106.2	233.3
STATES - SEPTEMBER 1996												
N.S.W.	133.0	41.5	144.8	30.4	515.4	119.9	40.9	21.8	30.0	91.8	95.8	90.5
Vic.	34.0	29.4	1.3	10.4	167.3	46.2	21.5	4.4	8.9	104.5	8.1	77.4
Qld	41.3	38.0	8.1	14.7	259.5	88.6	17.5	23.6	15.0	57.9	9.5	36.8
S.A.	12.6	12.9	0.4	2.4	41.6	32.6	7.3	0.8	3.1	30.2	2.5	19.2
W.A.	18.9	21.6	1.4	1.4	90.6	25.4	5.3	11.8	11.8	41.7	6.5	27.9
Tas.	0.5	0.8		0.2	11.2	2.9	2.9	0.1	0.5	10.5	0.7	5.3
N.T.	1.3	5.0		0.9	12.8	2.7	0.1	1.9	0.5	4.5	1.7	1.7
A.C.T.	17.0	1.5		0.6	27.6	6.9		0.5	0.9	1.5		1.3
STATES - OCTOBER 1996												
N.S.W.	115.3	49.9	45.3	38.4	560.2	115.3	24.5	21.9	20.8	91.8	67.6	67.3
Vic.	42.2	18.4	78.9	6.8	183.8	81.5	13.2	5.7	6.6	107.4	10.8	67.5
Qld	45.4	18.7	1.5	17.0	286.0	74.5	21.7	17.8	11.5	63.9	13.1	32.1
S.A.	3.8	6.2	0.2	4.1	43.2	15.7	8.9	1.7	3.2	31.0	2.8	20.5
W.A.	15.9	27.5	3.0	3.7	108.5	41.3	4.8	9.1	15.3	45.7	7.1	39.0
Tas.	1.5	0.3		0.5	10.7	2.0	2.2	0.1	1.3	7.1	0.7	3.7
N.T.	3.2	3.5		0.8	17.6	4.6	--	0.7	0.9	3.4	4.1	1.3
A.C.T.	10.5	3.6		0.1	27.1	9.6	0.1	1.0	3.2	1.2		1.9

TABLE 2 — COMMERCIAL FINANCE COMMITMENTS — ALL LENDERS — continued
(\$ million)

YEARS	Commitments under fixed loan facilities for —					Commitments under revolving credit facilities for —					
	Wholesale finance	Factoring	Refinancing	Other commitments	Total commitments	Debt participation in leveraged leases (included in total)	Commitments not drawn at end of period	New and increased credit limits during month	Cancellations and reductions of credit limits during period (a)	Credit limits at end of period	
										Total	Used
	AUSTRALIA										
1993 1994	3,914.7	624.4	6,621.0	8,666.6	46,582.9	209.0	5,621.1	48,556.5	37,268.8	137,535.8	86,412.8
1994-1995	3,857.3	805.9	7,999.5	7,783.9	50,519.6	181.9	5,916.4	53,811.8	40,758.8	145,822.7	93,061.1
1995-1996	4,548.2	3,410.3	11,313.3	13,352.8	64,323.0	1.8	6,808.5	74,786.3	50,146.2	165,975.9	109,450.6
1995											
August	322.6	287.6	1,042.8	860.8	5,556.2	1.8	6,015.9	5,142.2	3,501.1	143,436.2	91,446.0
September	299.9	82.8	901.5	1,206.0	5,107.1	—	4,709.7	5,671.1	3,350.4	145,306.7	93,627.9
October	326.9	96.0	725.1	817.3	4,597.4	—	5,115.7	4,966.0	3,838.5	145,795.2	94,925.1
November	292.7	98.3	714.8	1,134.9	5,190.2	—	4,781.8	5,219.4	2,989.5	150,497.3	99,534.5
December	381.4	118.6	983.7	1,364.8	5,297.1	—	5,249.2	8,673.2	3,933.4	156,001.8	101,422.8
1996											
January	148.3	82.2	842.5	844.3	4,471.2	—	5,578.3	7,611.2	4,095.3	159,719.2	103,817.2
February	317.4	93.8	839.2	1,021.0	4,964.1	—	5,631.6	5,735.3	4,710.9	161,626.6	105,409.7
March	664.9	170.5	949.0	910.9	5,992.6	—	5,580.7	6,124.6	5,053.2	162,391.1	106,212.3
April	400.6	108.2	778.5	603.1	4,613.1	—	5,631.1	7,127.3	5,450.1	163,880.6	106,330.9
May	405.3	108.6	1,191.6	1,248.2	6,210.9	—	6,557.7	6,674.9	5,113.8	163,994.2	108,890.1
June	498.6	88.7	1,516.6	2,655.4	7,700.1	—	6,808.5	6,905.2	4,535.1	165,975.9	109,450.6
July	535.6	185.9	1,635.5	1,577.4	6,961.2	2.5	6,607.8	7,545.6	5,077.7	173,942.9	112,621.2
August	320.8	131.6	1,061.8	924.2	5,580.9	4.3	6,282.0	5,865.1	3,566.2	176,026.4	113,110.8
September	325.7	106.3	819.4	1,271.6	5,552.5	15.9	6,170.5	5,471.8	4,389.8	176,140.6	113,678.5
October	354.2	110.9	1,131.7	801.2	5,454.7	8.3	6,375.0	6,098.2	4,198.2	178,058.0	114,232.0
	STATES SEPTEMBER 1996										
N.S.W.	158.1	30.5	357.3	302.0	2,203.9	—	3,781.3	3,357.2	2,430.6	86,217.5	57,510.2
Vic.	69.0	11.5	155.5	729.0	1,478.5	—	826.0	1,300.6	1,392.6	59,308.7	36,804.5
Qld	53.6	14.9	137.1	117.6	933.6	—	868.2	371.8	179.7	13,851.0	8,722.3
S.A.	16.8	14.5	63.0	51.0	310.9	—	294.3	181.5	193.3	6,673.7	4,228.0
W.A.	25.8	34.8	79.1	57.1	454.8	15.9	290.9	188.8	149.5	7,516.5	4,812.8
Tas.	0.9	—	12.9	5.5	55.1	—	55.7	27.1	19.7	1,164.8	588.6
N.T.	0.3	—	3.1	4.4	40.7	—	30.1	19.3	11.7	405.5	238.0
A.C.T.	1.3	—	11.3	4.9	75.2	—	24.0	23.5	12.7	1,002.9	774.1
	STATES OCTOBER 1996										
N.S.W.	146.1	37.8	660.6	347.6	2,410.2	—	3,955.9	3,553.7	2,360.9	87,581.7	58,077.2
Vic.	97.8	12.6	188.2	152.5	1,074.0	—	848.4	1,591.6	1,154.1	59,528.4	36,611.2
Qld	60.3	18.7	136.3	146.0	984.2	—	833.4	446.3	296.6	14,047.9	8,918.1
S.A.	20.6	15.2	45.9	50.5	273.4	—	292.8	172.6	174.6	6,654.1	4,113.7
W.A.	26.1	26.6	74.6	86.2	536.4	8.3	334.7	274.7	183.0	7,656.9	4,823.9
Tas.	1.1	—	7.9	7.3	46.5	—	51.2	18.7	12.7	1,171.4	597.6
N.T.	1.0	—	2.4	4.5	47.9	—	24.7	20.2	7.0	416.5	311.3
A.C.T.	1.3	—	15.8	6.5	82.0	—	34.0	18.5	9.4	1,001.1	779.0

(a) Includes transfers of existing commitments between States



For more information . . .

The ABS publishes a wide range of statistics and other information on Australia's economic and social conditions. Details of what is available in various publications and other products can be found in the ABS Catalogue of Publications and Products available from all ABS Offices.

ABS Products and Services

Many standard products are available from ABS bookshops located in each State and Territory. In addition to these products, information tailored to the needs of clients can be obtained on a wide range of media by contacting your nearest ABS Office. The ABS also provides a Subscription Service for standard products and some tailored information services.

National *Dial-a-Statistic* Line

0055 86 400

Steadycom P/L: premium rate 25c/21.4 secs.

This number gives 24-hour access, 365 days a year, for a range of important economic statistics including the CPI.

Internet

<http://www.statistics.gov.au>

A wide range of ABS information is available via the Internet, with basic statistics available for each State, Territory and Australia. We also have Key National Indicators, ABS product release details and other information of general interest.

Sales and Inquiries

Keylink STAT.INFO/ABS
X.400 (C:Australia,PUB:Telememo,O:ABS,FN:STAT,SN:INFO)
Internet stat.info@abs.telememo.au

National Mail Order Service (06) 252 5249
Subscription Service 1800 02 0608

	Information Inquiries	Bookshop Sales
SYDNEY	(02) 9268 4611	9268 4620
MELBOURNE	(03) 9615 7755	9615 7755
BRISBANE	(07) 3222 6351	3222 6350
PERTH	(09) 360 5140	360 5307
ADELAIDE	(08) 8237 7100	8237 7582
HOBART	(03) 6220 5800	6205 800
CANBERRA	(06) 252 6627	207 0326
DARWIN	(089) 432 111	432 111

Information Services, ABS, PO Box 796, Sydney NSW 2001

